

# FABRIC FACE MASK WITH FILTER POCKET TUTORIAL

## Supplies Needed:

Tightly woven 100% cotton fabric

½' wide elastic

Thread

Scissors

Ruler

Pencil



Photo 1:

Cut 3 pieces of fabric 9"x6". I used two of the same print for the pocket portion and one of another print for the front. Also cut 2 lengths of elastic 7".

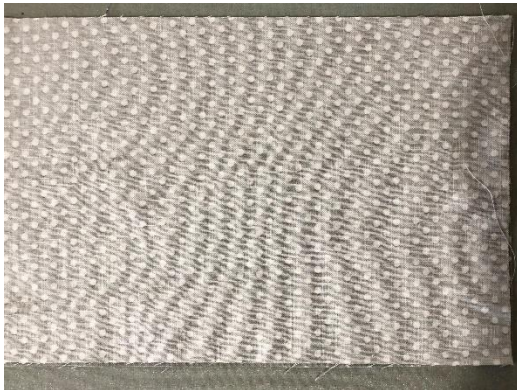


Photo 2:

Place pocket pieces right sides together.



Photo 3:

Fold pocket pieces in half lengthwise. Iron both ends, pressing about 2" down the center of the pieces.





Photos 4-6:

Using the pressed line as a guide, mark a dot 2" from each end.

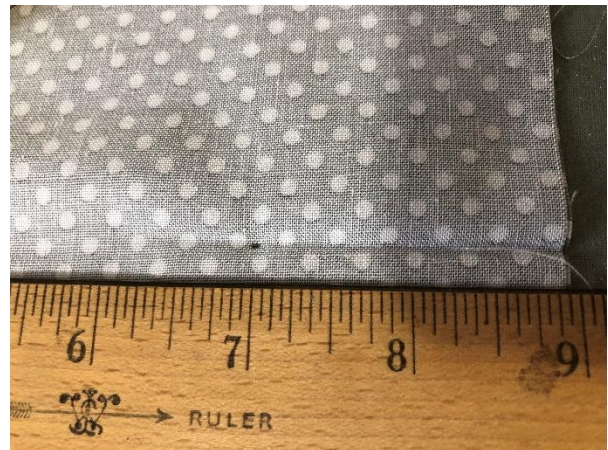
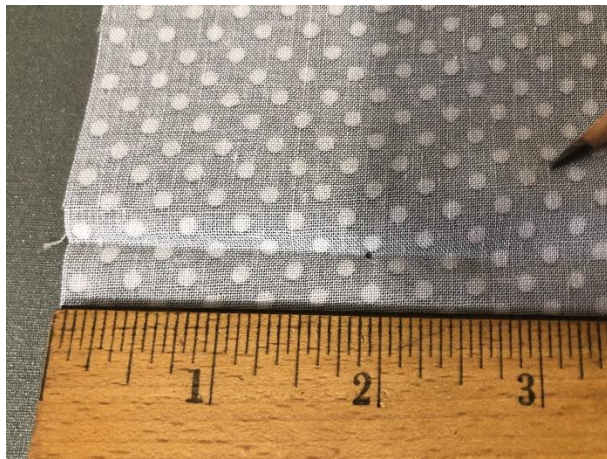


Photo 7:

Using the ironed mark as a guide, sew down to the marked spot, backstitching to reinforce. Do this on both ends of the pocket.





Photo 8:

Fold wrong sides together of both sides of the pocket so that the opening slit is now in the center of the piece.



Photo 9:

Topstitch around the pocket opening. Backstitch several times at both ends to reinforce the opening.





Photo 10:

Place wrong side of top piece onto pocket portion.



Photos 11-12:

Pin one elastic piece into both corners of one short end, making sure the elastic doesn't twist. Repeat on other end.



Photo 13:

Place pins in middle of pieces to hold securely while you sew them together.





Photo 14:

Sew around entire piece, angling over elastic at each corner and backstitching over elastic to reinforce it. Cut off corners to make for easier turning.



Photo 15:

Use pocket to turn right sides out.



Photo 16:

Use iron to press seams flat.





Photos 17-18:

Make 3 evenly spaced pleats on each side and pin in place.



Photo 19: Topstitch around entire piece, forming pleats.



Photo 20:

Stitch along each end over pleats to reinforce.



Photo 21:

Front of finished mask.



Photo 22:

Back of finished mask. A filter can be inserted into the mask for greater protection.